

# Application Note

## 4xN LED Driver

### AN-CM-282

#### Abstract

*This application note describes how to control four 7-Segment LED displays using a GreenPAK IC. To control which characters are displayed on the multiplexed LED screen, this solution uses I2C to reconfigure the LED drive signals coming from the GreenPAK's asynchronous state machine outputs. This solution can be expanded to control up to four 16-segment LED screens.*

---

---

## 4xN LED Driver

## Contents

<b>Abstract</b> .....	<b>1</b>
<b>Contents</b> .....	<b>2</b>
<b>Figures</b> .....	<b>2</b>
<b>Tables</b> .....	<b>2</b>
<b>1 Terms and Definitions</b> .....	<b>3</b>
<b>2 References</b> .....	<b>3</b>
<b>3 Introduction</b> .....	<b>4</b>
<b>4 Background</b> .....	<b>4</b>
<b>5 GreenPAK Design</b> .....	<b>5</b>
5.1 Digit Signal Generation .....	5
5.2 Segment Signal Generation .....	6
5.2.1 ASM Configuration .....	6
<b>6 Testing</b> .....	<b>7</b>
<b>7 Conclusions</b> .....	<b>9</b>
<b>Revision History</b> .....	<b>10</b>

## Figures

Figure 1: 7-segment LED Display .....	4
Figure 2: Common Anode Configuration .....	4
Figure 3: Common Cathode Configuration .....	4
Figure 4: 4 x 7-segment LED Display .....	5
Figure 5: GreenPAK Design .....	5
Figure 6: Digit Selection Signals .....	6
Figure 7: ASM State Diagram .....	7
Figure 8: Circuit Schematic .....	8

## Tables

Table 1: ASM RAM correspondence with 4x7 LED Display .....	7
Table 2: Digit 1 segment connection with ASM RAM .....	7
Table 3: ASM RAM Configuration .....	8
Table 4: I2C Structure .....	9

---

## 4xN LED Driver

### 1 Terms and Definitions

LED	Light Emitting Diode
ASM	Asynchronous State Machine
DFF	D Flip Flop
I2C	Inter-Integrated Circuit Serial Communication

### 2 References

For related documents and software, please visit:

<https://www.dialog-semiconductor.com/configurable-mixed-signal>

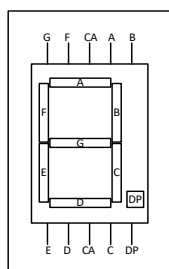
Download our free [GreenPAK Designer](#) software [1] to open the .gp files [2] and view the proposed circuit design. Use the [GreenPAK development tools](#) [3] to freeze the design into your own customized IC in a matter of minutes. Dialog Semiconductor provides a complete library of application notes [4] featuring design examples as well as explanations of features and blocks within the Dialog IC.

- [1] [GreenPAK Designer Software](#), Software Download and User Guide, Dialog Semiconductor
- [2] [AN-CM-282 4xN LED Driver.gp](#), [GreenPAK Design File](#), Dialog Semiconductor
- [3] [GreenPAK Development Tools](#), [GreenPAK Development Tools Webpage](#), Dialog Semiconductor
- [4] [GreenPAK Application Notes](#), [GreenPAK Application Notes Webpage](#), Dialog Semiconductor
- [5] [SLG46537](#), Datasheet, Dialog Semiconductor.
- [6] [AN-1092](#), I2C Controlled State Machine, Application Note, Dialog Semiconductor.

## 4xN LED Driver

### 3 Introduction

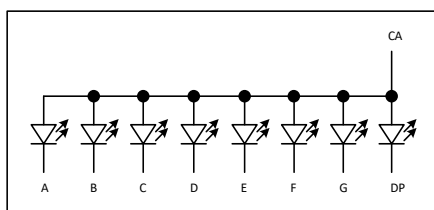
LED displays are widely used in systems ranging from digital clocks, counters, timers, electronic meters, basic calculators, and other electronic devices capable of displaying numerical information. [Figure 1](#) depicts an example of a 7-segment LED display which can show decimal numbers and characters. As each segment on the LED display can be controlled individually, this control can require a lot of signals, especially for multiple digits. This application note describes a [GreenPAK](#) - based implementation to drive multiple digits with a 2-wire I2C interface from an MCU.



**Figure 1: 7-segment LED Display**

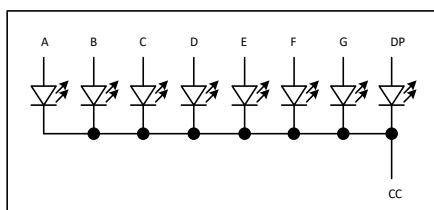
### 4 Background

The LED displays are divided into two categories: Common Anode and Common Cathode. In a common anode configuration, the anode terminals are internally shorted together as shown in [Figure 2](#). To turn ON the LED, the common anode terminal is connected to the system supply voltage VDD and the cathode terminals are connected to ground through current limiting resistors.



**Figure 2: Common Anode Configuration**

A common cathode configuration is similar to a common anode configuration except the cathode terminals are shorted together as shown in [Figure 3](#). To turn ON the common cathode LED display, the common cathode terminals are connected to ground and the anode terminals are connected to the system supply voltage VDD through current limiting resistors.



**Figure 3: Common Cathode Configuration**

An N-digit multiplexed LED display can be obtained by concatenating N individual 7-segment LED displays. [Figure 4](#) portrays an instance of a 4x7 LED display obtained by combining 4 individual 7-segment displays in a common anode configuration.

4xN LED Driver

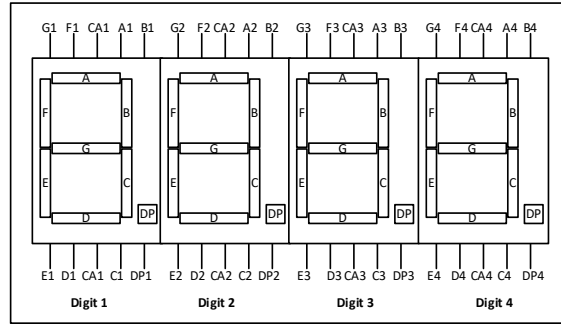


Figure 4: 4 x 7-segment LED Display

As seen in Figure 4, each digit has a common anode pin / backplane that can be used to individually enable each digit. The cathode pins for each segment (A, B, ...G, DP) should be shorted together externally. To configure this 4x7 LED display, the user requires only 12 pins (4-common pins for each digit and 8-segment pins) to control all the 32 segments of the multiplexed 4x7 display.

The GreenPAK design, detailed below, shows how to generate the control signals for this LED display. This design can be extended to control up to 4 digits and 16 segments. Please see the References section for a link to the GreenPAK design files available on Dialog's website.

5 GreenPAK Design

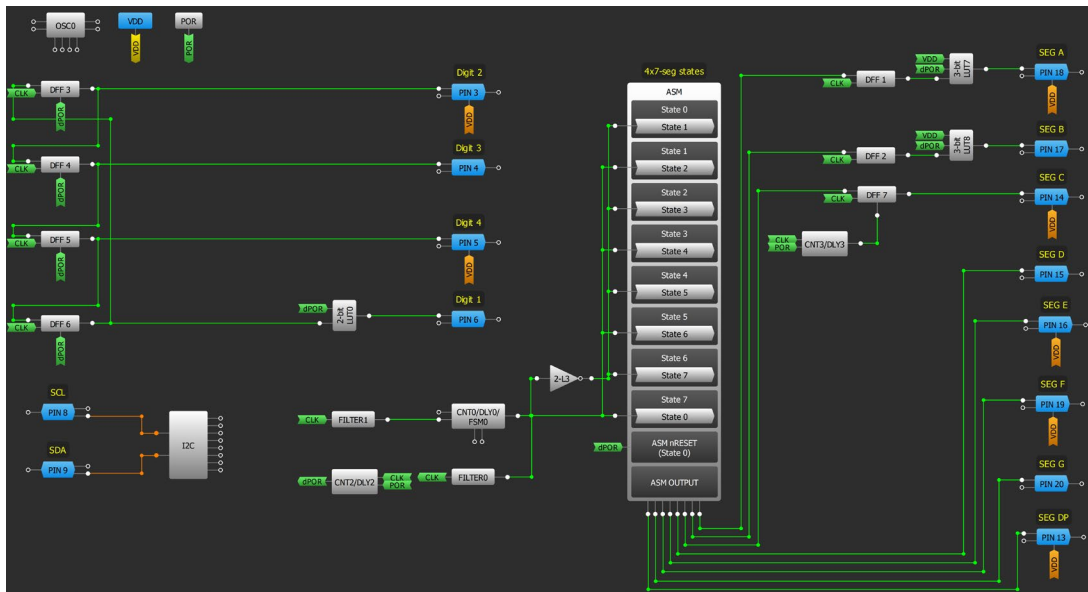


Figure 5: GreenPAK Design

The GreenPAK design displayed in Figure 5 includes both the segment and digit signal generation in one design. The segment signals are generated from the ASM and the digit selection signals are created from the DFF chain. The segment signals are connected to the segment pins through current limiting resistors, but the digit selection signals are connected to the common pins of the display.

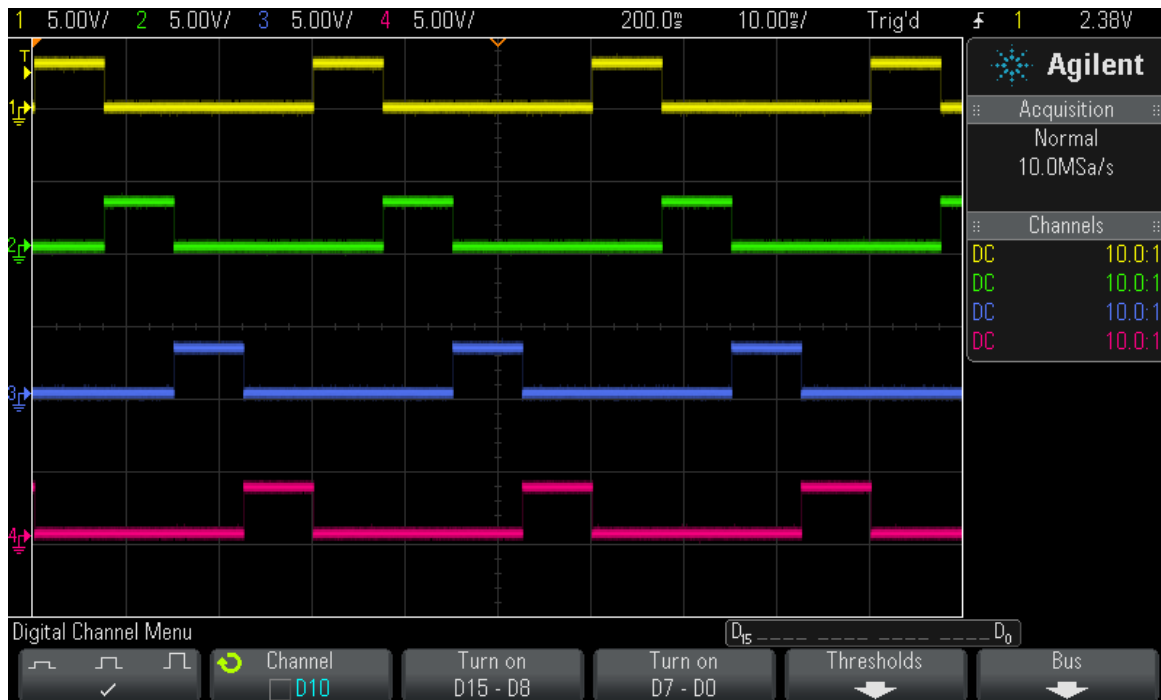
5.1 Digit Signal Generation

As described in section 4, each digit on a multiplexed display has an individual backplane. In GreenPAK, the signals for each digit are generated from the internal oscillator-driven DFF chain.

**4xN LED Driver**

These signals drive the common pins of the display. [Figure 6](#) displays the digit selection signals.

- Channel 1 (Yellow) – Pin 6 (Digit 1)
- Channel 2 (Green) – Pin 3 (Digit 2)
- Channel 3 (Blue) – Pin 4 (Digit 3)
- Channel 4 (Magenta) – Pin 5 (Digit 4)



**Figure 6: Digit Selection Signals**

## 5.2 Segment Signal Generation

The **GreenPAK** ASM generates different patterns to drive the segment signals. A 7.5ms counter cycles through the ASM states. As the ASM is level sensitive, this design utilizes a control system that avoids the possibility of rapidly switching through multiple states during the high period of the 7.5ms clock. This specific implementation relies on consecutive ASM states controlled by inverted clock polarities. Both the segment and digit signals are generated by the same 25kHz internal oscillator.

### 5.2.1 ASM Configuration

[Figure 7](#) describes the state diagram of the ASM. State 0 automatically switches to State 1. A similar switch occurs from State 2 to State 3, State 4 to State 5, and State 6 to State 7. Data from State 0, State 2, State 4, and State 6 are instantly latched using DFF 1, DFF 2, and DFF 7 as shown in [Figure 5](#), before the ASM transitions to the next state. These DFFs latch the data from the even states of the ASM, which enables the user to control an extended 4x11/4xN (N up to 16 segments) display using **GreenPAK**'s ASM.

Each digit on a 4xN display is controlled by two states of the ASM. State 0/1, State 2/3, State 4/5, and State 6/7 respectively control Digit 1, Digit 2, Digit 3, and Digit 4. [Table 1](#) describes the ASM states along with their respective RAM addresses to control each digit.

Each state of the ASM RAM stores one byte of data. So, to configure a 4x7 display, three segments of Digit 1 are controlled by State 0 of the ASM and five segments of Digit 1 are controlled by State 1 of the ASM. As a result, all segments of each digit on the LED display are obtained by concatenating

4xN LED Driver

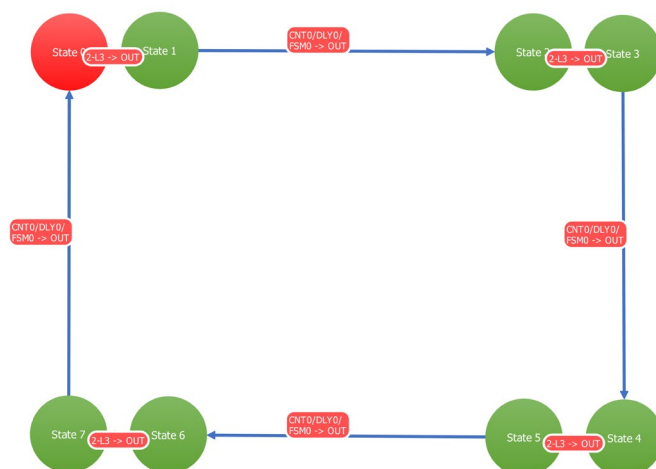


Figure 7: ASM State Diagram

the segments from their corresponding two states. Table 2 describes the location of each of Digit 1's segments in the ASM RAM. In a similar way, ASM's State 2 through State 7 respectively include the segment locations of Digit 2 to Digit 4.

Table 1: ASM RAM correspondence with 4x7 LED Display

ASM State#	ASM RAM Address	LED Digit Location
State 0	0xD0	Digit 1
State 1	0xD1	Digit 1
State 2	0xD2	Digit 2
State 3	0xD3	Digit 2
State 4	0xD4	Digit 3
State 5	0xD5	Digit 3
State 6	0xD6	Digit 4
State 7	0xD7	Digit 4

As seen from Table 2, OUT 3 to OUT 7 segments of State 0 and OUT 0 to OUT 2 segments of State 1 are unused. The GreenPAK design in Figure 5 can control a 4x11 display by configuring the OUT 0 to OUT 2 segments of all odd states of the ASM. This design can be further expanded to control an extended 4xN (N up to 16 segments) display by using more DFF logic cells and GPIOs.

Table 2: Digit 1 segment connection with ASM RAM

	ASM RAM							
	OUT 7	OUT 6	OUT 5	OUT 4	OUT 3	OUT 2	OUT 1	OUT 0
State 0	x	x	x	x	x	SEG C	SEG B	SEG A
State 1	SEG DP	SEG G	SEG F	SEG E	SEG D	x	x	x

## 6 Testing

Figure 8 shows the test schematic used to display decimal numbers on the 4x7-segment LED display. An Arduino Uno is used for I2C communicating with the GreenPAK's ASM RAM registers. For more information on I2C communication, please refer to [6]. The common anode pins of the

4xN LED Driver

display are connected to the digit selection GPIOs. The segment pins are connected to the ASM through current limiting resistors. The current-limiting resistor sizing is inversely proportional to the brightness of the LED display. The user can select strength of the current limiting resistors depending on the maximum average current of GreenPAK GPIOs and maximum DC current of the LED display.

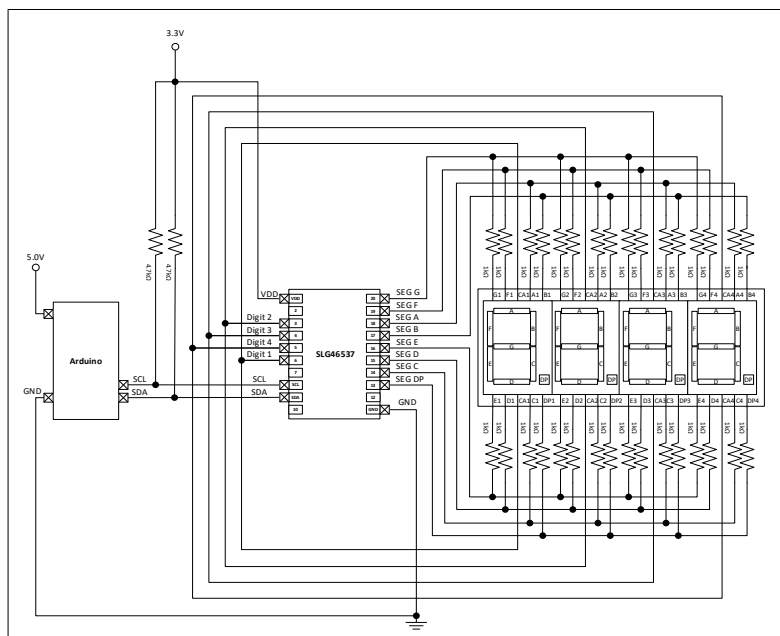


Figure 8: Circuit Schematic

Table 3 describes decimal numbers 0 through 9 in both binary and hexadecimal format to be displayed on the 4x7 display. 0 indicates that a segment is ON and 1 indicates that the segment is OFF. As shown in Table 3, two bytes are required to display a number on the display. By correlating Table 1, Table 2, and Table 3, the user can modify the ASM's RAM registers to display different numbers on the screen.

Table 3: ASM RAM Configuration

Decimal Number	LED Segments								Data Byte (Hex)
	DP	G	F	E	D	C	B	A	
0	1	1	1	1	1	0	0	0	0xF8
	1	1	0	0	0	1	1	1	0xC7
1	1	1	1	1	1	0	0	1	0xF9
	1	1	1	1	1	1	1	1	0xFF
2	1	1	1	1	1	1	0	0	0xFC
	1	0	1	0	0	1	1	1	0xA7
3	1	1	1	1	1	0	0	0	0xF8
	1	0	1	1	0	1	1	1	0xB7
4	1	1	1	1	1	0	0	1	0xF9
	1	0	0	1	1	1	1	1	0x9F
5	1	1	1	1	1	0	1	0	0xFA



## 4xN LED Driver

	1	0	0	1	0	1	1	1	0x97
6	1	1	1	1	1	0	1	0	0xFA
	1	0	0	0	0	1	1	1	0x87
7	1	1	1	1	1	0	0	0	0xF8
	1	1	1	1	1	1	1	1	0xFF
8	1	1	1	1	1	0	0	0	0xF8
	1	0	0	0	0	1	1	1	0x87
9	1	1	1	1	1	0	0	0	0xF8
	1	0	0	1	0	1	1	1	0x97

Table 4 describes the I2C command structure for Digit 1 on the 4x7 LED display. The I2C commands require a start bit, control byte, word address, data byte, and stop bit. Similar I2C commands can be written for Digit 2, Digit 3, and Digit 4.

Table 4: I2C Structure

Information	Data (Hex)
Start Bit	START
Control Byte/Slave Address	0x50
Word Address/ RAM 8 outputs for ASM-state 0	0xD0
Data for ASM-State 0	Digit 1
Data for ASM-State 1	Digit 1
Stop Bit	STOP

For example, to write 1234 on the 4x7 LED display, following I2C commands are written.

```
[0x50 0xD0 0xF9 0xFF]
[0x50 0xD2 0xFC 0xA7]
[0x50 0xD4 0xF8 0xB7]
[0x50 0xD6 0xF9 0x9F]
```

By repeatedly writing all eight bytes of the ASM, the user can modify the displayed pattern. As an example, a counter code is included in the ZIP file of this application note on Dialog's website.

## 7 Conclusions

The **GreenPAK** solution described in this application note enables the user to minimize cost, component count, board space, and power consumption.

Most of the times MCUs have limited number of GPIOs, so offloading the LED driving GPIOs to a small and inexpensive **GreenPAK** IC enables the user to save IOs for additional functionalities.

Moreover, **GreenPAK** ICs are easy to test. The ASM RAM can be modified with a click of a few buttons in the **GreenPAK** Designer Software, which indicates flexible design modifications. By configuring the ASM as described in this application note, the user can control four N-segment LED displays with up to 16 segments each.

## 4xN LED Driver

## Revision History

Revision	Date	Description
<M.n>	<DD-Mmm-YYYY>	<Latest revision. Summary of important changes.>
<p>Change details:</p> <p><b>For changes:</b></p> <ul style="list-style-type: none"><li>● <a href="#">Section n: Title</a> (hyperlinked)<ul style="list-style-type: none"><li>○ Reference (section, parameter, table, figure): Description of change (preferred: changed from x to y).</li></ul></li></ul> <p><b>For deleted items:</b></p> <ul style="list-style-type: none"><li>● Section/Figure/Table n: Title - removed.</li></ul> <p><b>Example:</b></p> <ul style="list-style-type: none"><li>● <a href="#">Section 5: LDO1</a><ul style="list-style-type: none"><li>○ Description: updated maximum voltage.</li><li>○ V<sub>OH_MAX</sub>: changed from 3 V to 5.5 V.</li><li>○ Figure 12: updated maximum voltage.</li></ul></li><li>● Table 24: updated electrical characteristics.</li></ul>		
1.0	<DD-Mmm-YYYY>	Initial version.

## 4xN LED Driver

### Status Definitions

Status	Definition
DRAFT	The content of this document is under review and subject to formal approval, which may result in modifications or additions.
APPROVED or unmarked	The content of this document has been approved for publication.

### Disclaimer

Information in this document is believed to be accurate and reliable. However, Dialog Semiconductor does not give any representations or warranties, expressed or implied, as to the accuracy or completeness of such information. Dialog Semiconductor furthermore takes no responsibility whatsoever for the content in this document if provided by any information source outside of Dialog Semiconductor.

Dialog Semiconductor reserves the right to change without notice the information published in this document, including without limitation the specification and the design of the related semiconductor products, software and applications.

Applications, software, and semiconductor products described in this document are for illustrative purposes only. Dialog Semiconductor makes no representation or warranty that such applications, software and semiconductor products will be suitable for the specified use without further testing or modification. Unless otherwise agreed in writing, such testing or modification is the sole responsibility of the customer and Dialog Semiconductor excludes all liability in this respect.

Customer notes that nothing in this document may be construed as a license for customer to use the Dialog Semiconductor products, software and applications referred to in this document. Such license must be separately sought by customer with Dialog Semiconductor.

All use of Dialog Semiconductor products, software and applications referred to in this document are subject to Dialog Semiconductor's [Standard Terms and Conditions of Sale](http://www.dialog-semiconductor.com), available on the company website ([www.dialog-semiconductor.com](http://www.dialog-semiconductor.com)) unless otherwise stated.

Dialog and the Dialog logo are trademarks of Dialog Semiconductor plc or its subsidiaries. All other product or service names are the property of their respective owners.

© 2019 Dialog Semiconductor. All rights reserved.

## Contacting Dialog Semiconductor

### United Kingdom (Headquarters)

*Dialog Semiconductor (UK) LTD*  
Phone: +44 1793 757700

### Germany

*Dialog Semiconductor GmbH*  
Phone: +49 7021 805-0

### The Netherlands

*Dialog Semiconductor B.V.*  
Phone: +31 73 640 8822

### Email:

[enquiry@diasemi.com](mailto:enquiry@diasemi.com)

### North America

*Dialog Semiconductor Inc.*  
Phone: +1 408 845 8500

### Japan

*Dialog Semiconductor K. K.*  
Phone: +81 3 5769 5100

### Taiwan

*Dialog Semiconductor Taiwan*  
Phone: +886 281 786 222

### Web site:

[www.dialog-semiconductor.com](http://www.dialog-semiconductor.com)

### Hong Kong

*Dialog Semiconductor Hong Kong*  
Phone: +852 2607 4271

### Korea

*Dialog Semiconductor Korea*  
Phone: +82 2 3469 8200

### China (Shenzhen)

*Dialog Semiconductor China*  
Phone: +86 755 2981 3669

### China (Shanghai)

*Dialog Semiconductor China*  
Phone: +86 21 5424 9058